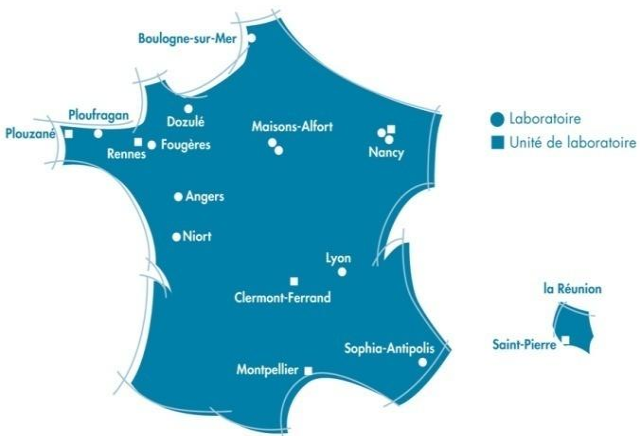




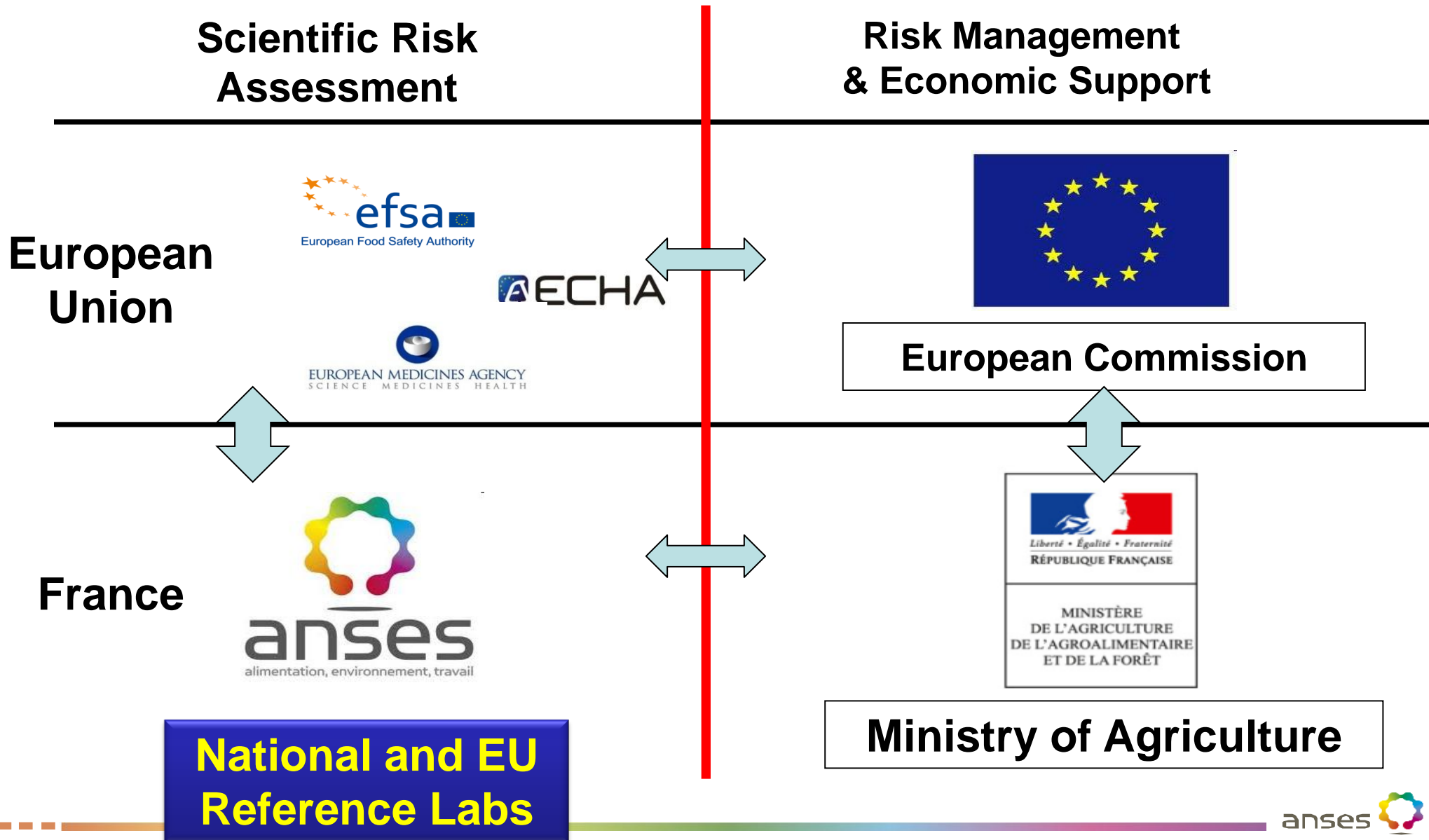
Elements & measures in crisis situation

The role of the national & European reference laboratories



Dr Pascale Parisot
Scientific affairs dpt

Anses and Institutions involved in food safety

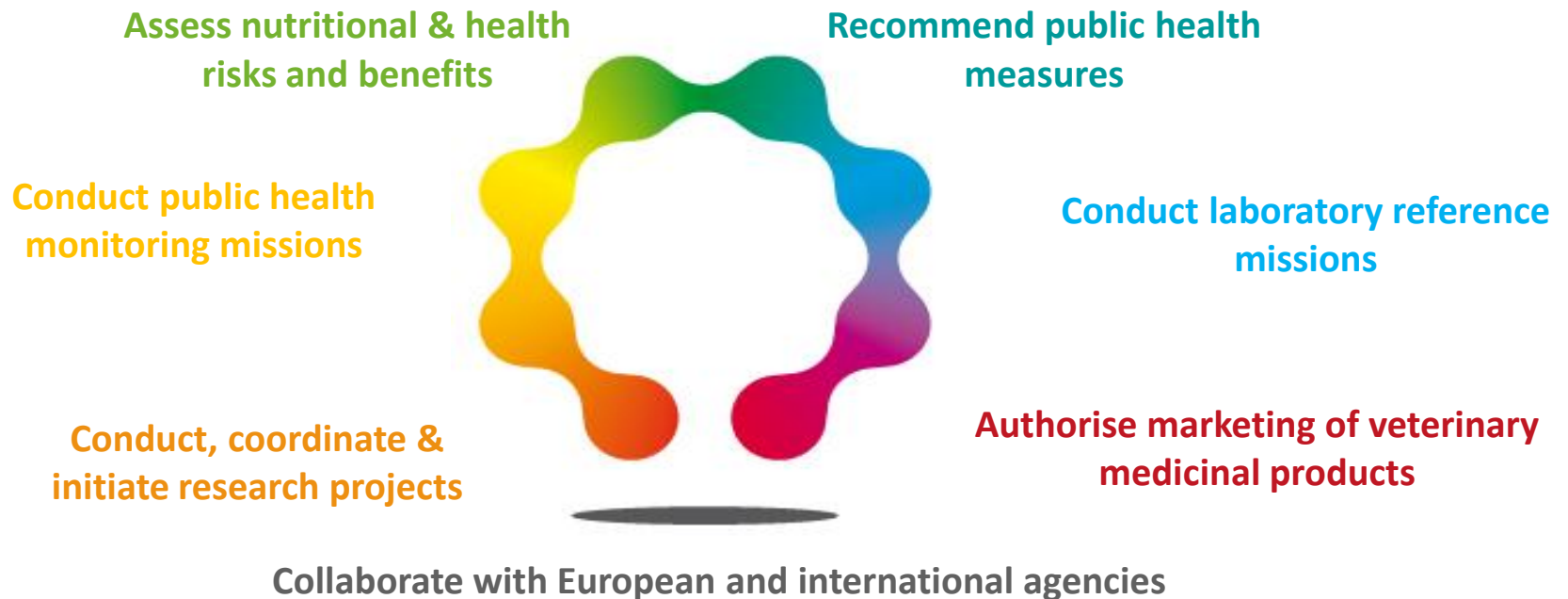


ANSES

- ANSES was created on July 1st 2010 by merging the agency in charge of **food safety** with the agency in charge of **occupational & environmental health safety**
- Agency reports to five ministries

ANSES contributes to :

- ensuring **human health & safety** regarding **environment, work & food** *as well as*
- protecting **animal health & welfare**
- protecting **plant health**



ANSES Key facts & figures

- ✓ **1350 staff**
- ✓ **800 external experts**
- ✓ **Annual budget: 130 million Euros**
- ✓ **Over 8,000 Opinions issued since 1999**
- ✓ **11 laboratories in 16 locations**
- ✓ **67 National Reference Laboratory mandates, 9 EURL mandates, 19 international mandates**



Reference for analysis performance

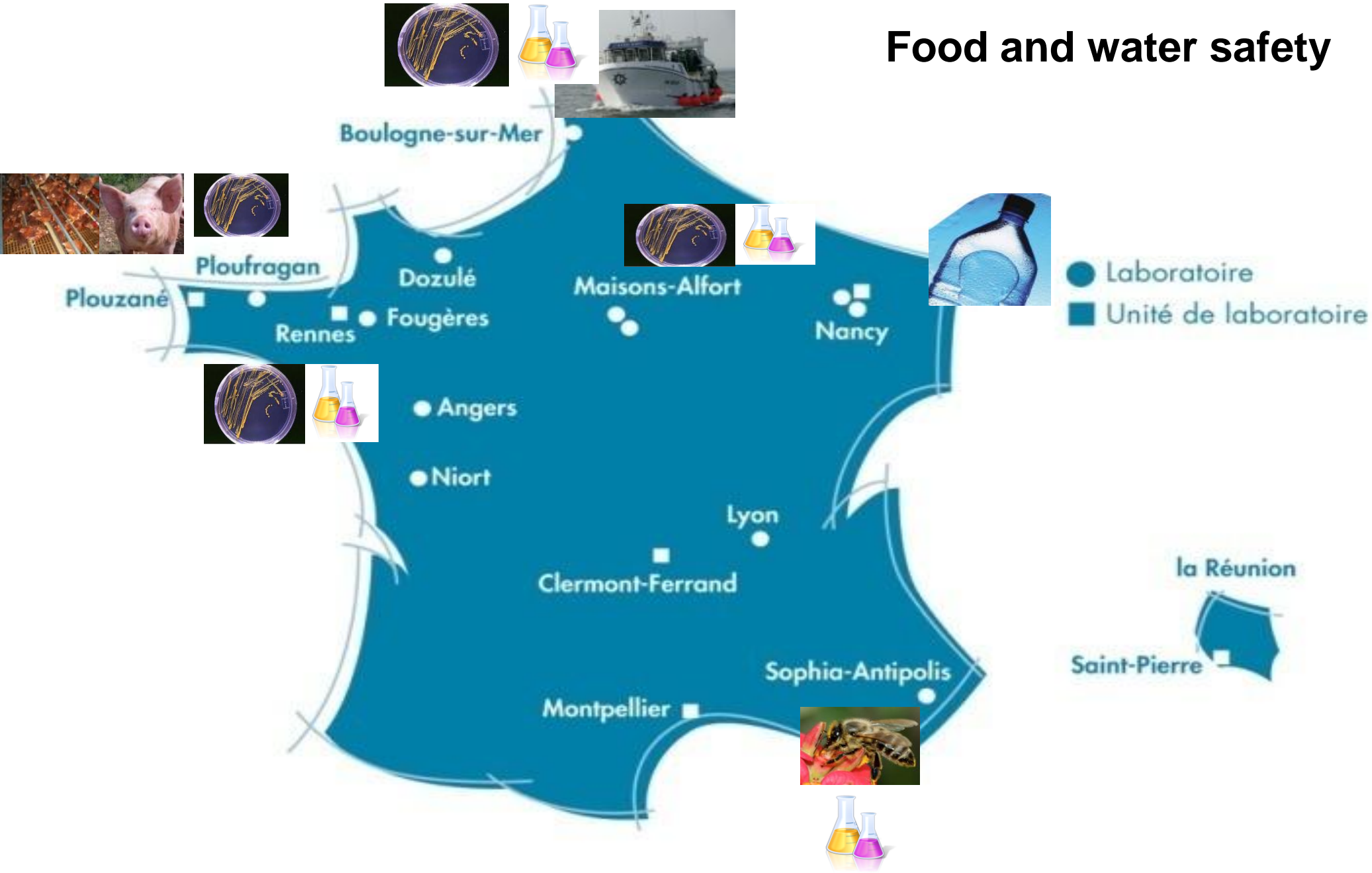
Reference activities

for official analysis performance

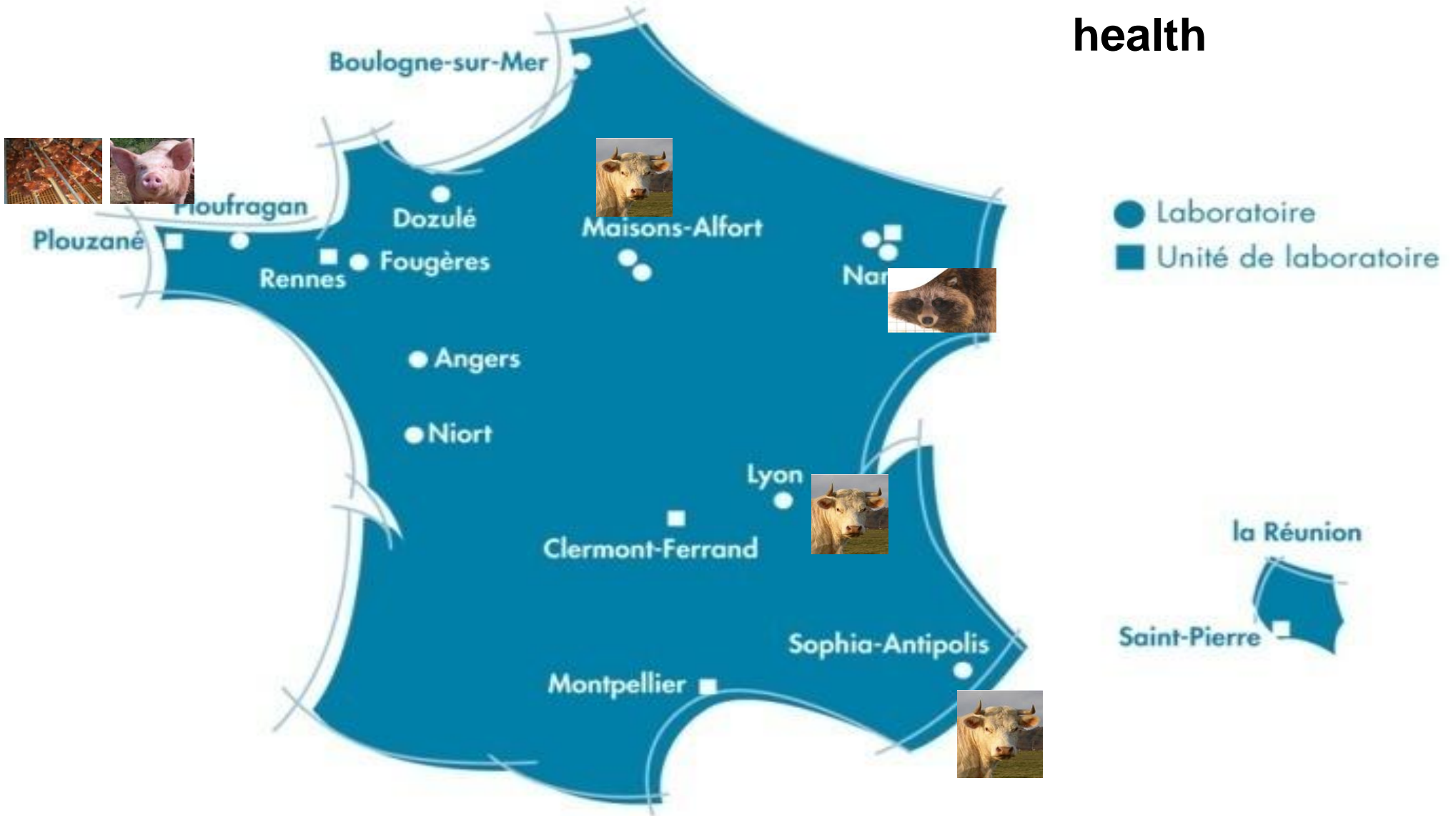
within Anses, in France, in the EU



Food and water safety



Food and animal health

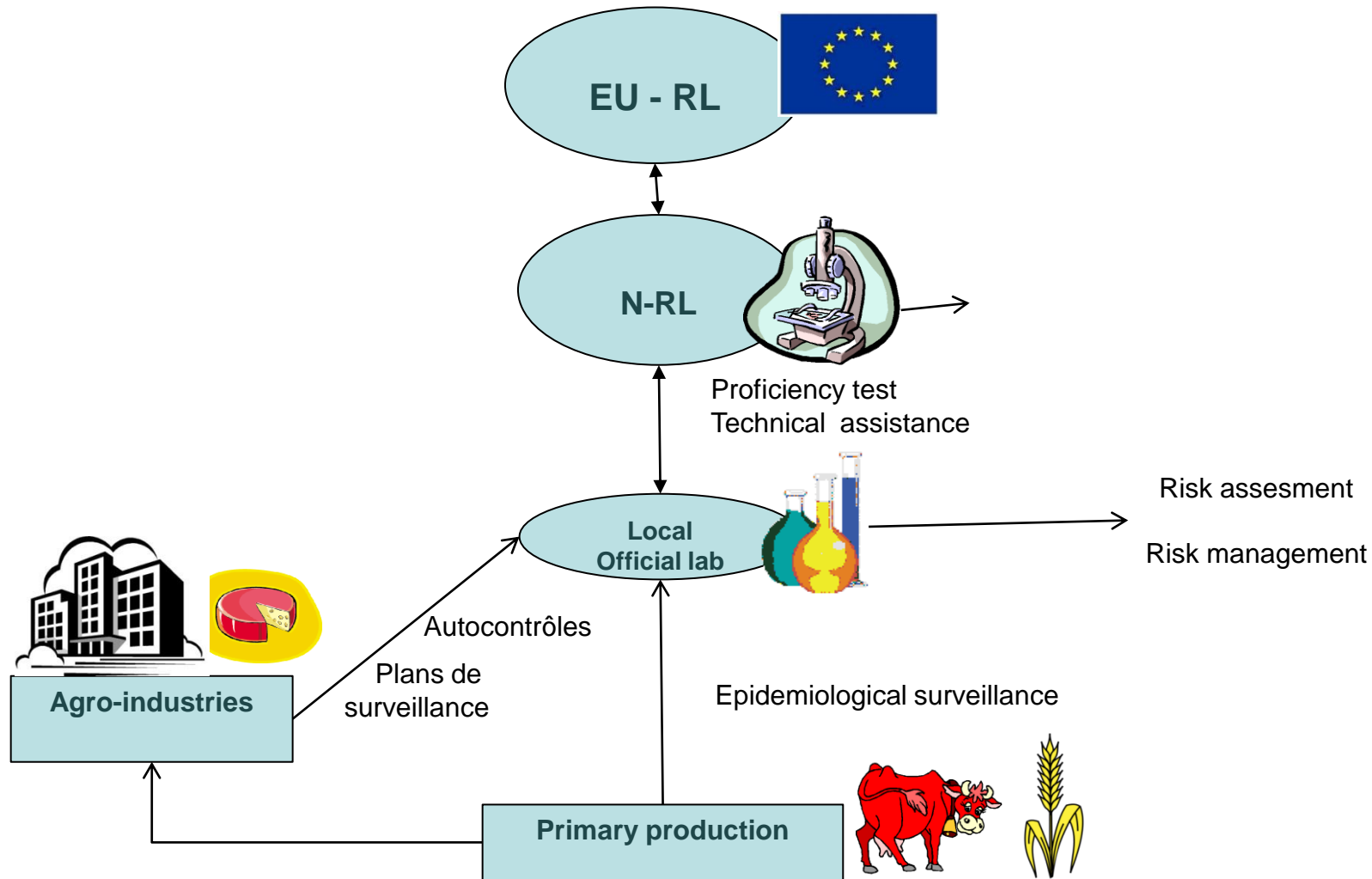


Main tasks for the Anses reference labs

- Reference
- Research
- Scientific and technical expertise
- Surveillance and Epidemiology



Reference framework (Reg 882/2004 EC)



Reference activities ,



National mandates (67)

including brucellosis for human health

European mandates (9)

milk products;

Staphylococcus toxins

Listeria monocytogenes

rabies (serology and virology)

bees health

equine diseases

vet medicines residues and dyes

brucellosis

OIE mandates :

rabies , brucellosis, blue tongue, FMD, ...

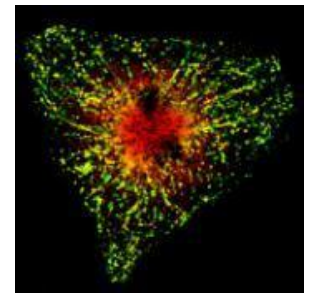


Reference activities



Reference = (*Regulation 882/2004 EC*)

- ✓ **Methods** development (→official methods or standards)
- ✓ **Proficiency tests** under 17043 QA system (not mandatory)
- ✓ **Trainings, technical advice**
- ✓ **Results Confirmation** (under ISO 17 025 accréd)
- ✓ **Biological materials and kits** production and validation



Reference activities and outbreaks



Reference organization

=

Official laboratories **network** at EU and national level
(*OIE/WHO*)

+

official method with known and **shared performance
criteria**

+

Competences



confidence



Research end reference

Research in reference laboratories

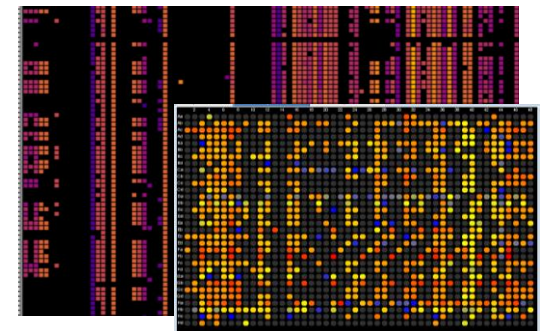
→ « risk evaluation oriented » :

- ✓ Host/pathogen interactions, pathogen virulence, toxin-producing mechanisms, contaminants toxicity, bio-accessibility
- ✓ vectors
 - Epidemiology, Prevalence and distribution
 - Modelisation of bacterial behaviour



→ « reference oriented » for methods development

- ✓ highthroughput qPCR and genomics dvpts :
- ✓ pathogenicity,
resistance characterizations
- ✓ Toxicity investigations and chemicals identification



Research activities and outbreaks



Research in Reference labs

=

International scientific network

Reference materials, MS, and strains

+

High level **technologies dvpt and mutualisation**



**Anticipation and
reactivity**



Scientific and technical expertise in routine and during outbreaks

To the relevant authorities ([EU], national and local levels):



On site expertises

« On text » advice

On line consultation



Reference **and** surveillance

What happen if we link reference laboratories networks and surveillance networks ?



→ Samples collection



Strains characterization
and identification

contaminants
identification



Surveillance linked to reference activities and outbreaks



Reference labs

=

National and EU (+*international*) surveillance **potential network**

+

methods of analysis and database shared **criteria (potential guidelines)**



New EU and global approach of outbreaks understanding and management

As a conclusion about the role of reference laboratories

The EU [*and international*] **reference activities system** in outbreaks situations **brings**

→ **Confidence** between actors



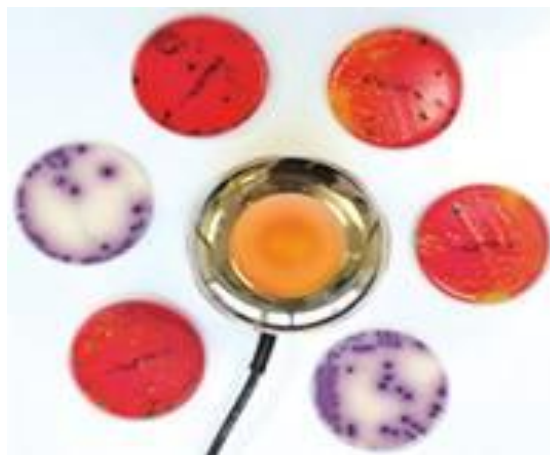
Linked with **research activities** it adds

→ **Reactivity and anticipation**



Linked with **surveillance** involving **stakeholders and international partners**, it should improve

→ **Global understanding and prevention of outbreaks**



Thank you for your attention

www.anses.fr